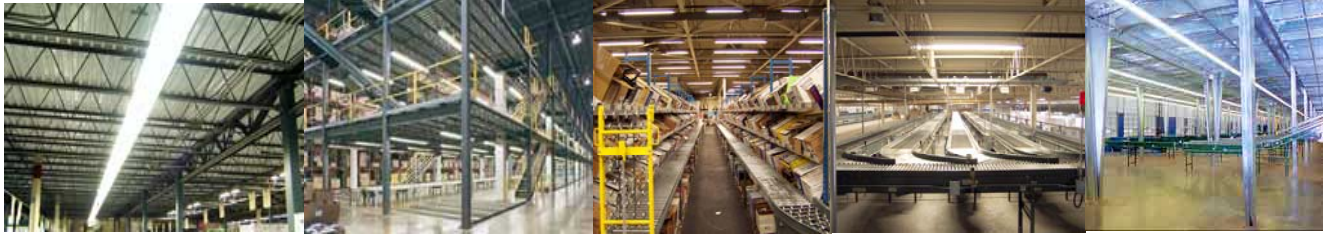




American Warehouse Systems

Lighting System Specifications



General-

1. The lighting system shall be custom designed by an established firm specializing in mezzanine lighting such as American Warehouse Systems.
2. All field and design work shall be completed or supervised by a licensed master electrician.
3. Lighting system shall provide and minimum luminance level of 50 foot-candles measured at 30 inches above the floor, or other luminance level provided by customer.
4. Lighting system shall be completely supported by the mezzanine structure.

Fixtures-

1. Energy efficient T-8 fluorescent lighting fixtures using 4-foot tubes shall be utilized to light the under mezzanine area, or other fixtures specified by the customer.
2. Lighting fixture boxes shall not be smaller than 4 inches (octagonal), except where required by fixture configuration and approved by the customer.
3. Fixtures shall provide rapid start lighting.

On / Off Switches-

1. On/off switches shall be located on the mezzanine columns.
2. Switches shall be located 52 inches +/- 2 inches in height from the floor.
3. Light switches shall be provided with recessed cover plates.